

Test and measurement equipment for the development, maintenance and repair of PCBs



- ▶ Speed up processes with interactive test sequences
- ▶ Reduce operator errors with automatic instrument setup
- ▶ Detect fault conditions not visible with other instruments
- ▶ Increase test coverage with innovative test techniques
- ▶ Diagnose programmable components with JTAG
- ▶ Generate your own schematics from sample PCBs
- ▶ Protect your business against counterfeit components

NEW PRODUCT

SYSTEM 8
Advanced Matrix Scanner

ABI Electronics

ABI Electronics is a UK-based company that designs, manufactures and distributes test, measurement and fault diagnostics equipment for the electronics industry.

ABI has developed and implemented a range of unique test techniques to support today's requirements for testing, measuring, maintaining and repairing PCBs.

The product range is designed to reduce time to test and repair, to simplify operation and to help organise and centralise information. It also offers access to unique techniques that are not available with other instruments.

abi

www.abielectronics.com

Universal diagnostic system

SYSTEM 8 BoardMaster 8000 PLUS

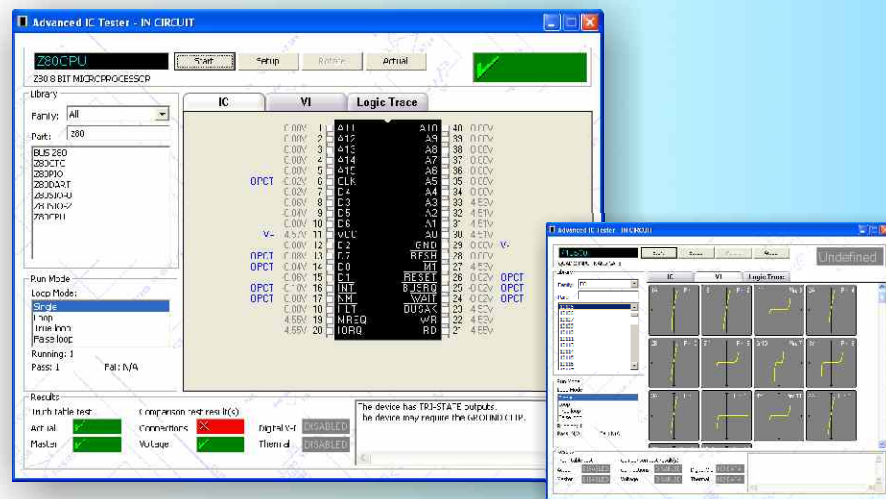
This is a uniquely versatile and self-contained solution offering a comprehensive set of test instruments for the maintenance and repair of digital and analogue PCBs.

- ✓ Reduce fault-finding time with automated test features
- ✓ Become self-dependent for all your maintenance needs
- ✓ Lower capital expenditure with one solution for all applications



Test capabilities

- In and out-of-circuit functional tests for digital ICs
- In-circuit functional tests for analogue ICs and discrete components
- Board level functional tests (with test fixtures)
- Multi-channel connection and voltage tests
- Power-off V/I signature tests



Advanced test features

- Custom logic tests with graphical generator
- Functional test program generator
- Integration with third party applications
- IC identification for unknown components
- Dynamic tests for gate-activated devices
- Custom traditional instruments
- Data logging to file or database

A **TestFlow** is a step by step sequence of tests that guides operators during the fault-finding process. Along with the instruments required for the tests, instructions, photos, videos and other documents can be included.

- ✓ Speed up test operations with the automatic instrument setup
- ✓ Reduce the risk of inaccurate measurements by saving the test parameters
- ✓ Remove data interpretation by using the automatic results comparison
- ✓ Free up engineers time by allowing semi-skilled operators to run TestFlows
- ✓ Improve traceability by generating test reports

ABI Electronics Ltd
Doodworth Business Park
Barnsley S75 3SP
United Kingdom

Registered in England - No 1024208

PCB Serial Number
8731-FPP957

System8 Training Board Report

Company: ABI Electronics Ltd Contact: System 8 Trainer Address: Doodworth Business Park City: Barnsley Post Code: S75 3SP Country: United Kingdom	Date: 15 November 2011 Time: 14:30 Phone: +44 (0) 1226 207 420 Fax: +44 (0) 1226 207 620 Email: sales@abielectronics.co.uk Website: www.abielectronics.co.uk
---	---

TestFlow Results

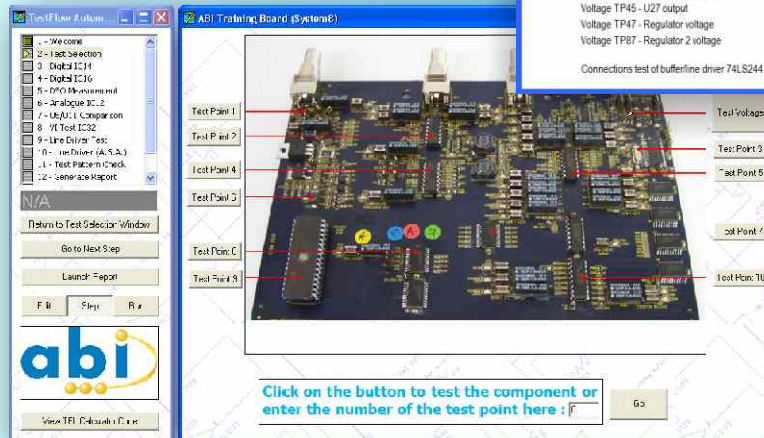
1) Test Point 1 Switching point of transistor using VT mode and pulse generator	TEST RESULTS PASS
2) Test Point 2 Functional test of operational amplifier LM324N	PASS
3) Test Point 3 Frequency and shape measurement of Crystal clock signal	Frequency = 4.004 MHz
1) Test Point 4 Voltage TP13 - Comparator input Voltage TP45 - U27 output Voltage TP47 - Regulator voltage Voltage TP87 - Regulator 2 voltage	3.274 V 0.155 V 4.987 V 4.997 V

Connections test of bufferline driver 74LS244

FAIL

Integrate in your TestFlows:

- PDF documents/datasheets
- Videos and flash animations
- Microsoft® Office documents
- Internet pages and websites
- Images, photos, schematics
- Links to external applications



Smartphone ?



V/I Signature Tester With Frequency Sweep

NEW



Advanced Matrix Scanner (SYSTEM 8 AMS)

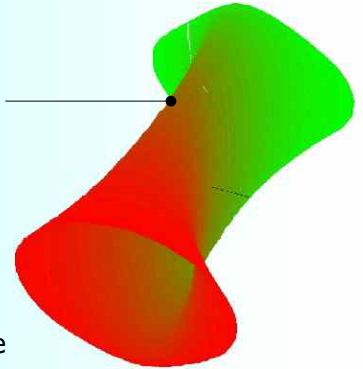
The latest addition to the SYSTEM 8 range, the AMS module offers multichannel V/I testing with frequency sweep and pulse outputs for the diagnostics of ICs and components under power off conditions.

- ✓ Increase test coverage with automatic frequency sweep
- ✓ Diagnose PCBs that cannot be powered up
- ✓ Speed up measurements using the multichannel connector
- ✓ Increase throughput with automated test sequences

Test capabilities

- V/I signature tests with sweeping frequency
- V/I signature tests (static frequency)
- Dynamic tests with pulse outputs
- Multi-reference V/I signature tests (Matrix)

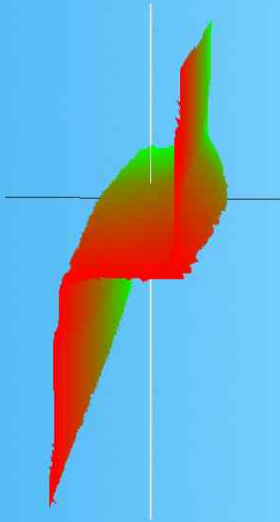
V/I signature with frequency sweep



What is V/I signature testing ?

A V/I signature is obtained by applying an AC voltage to the device under test, measuring the current at each point and plotting the response on a voltage/current graph. The SYSTEM 8 AMS adds an automatic frequency sweep to increase the level of test coverage. Analysing and comparing signatures can lead to finding faults such as:

- ✓ Leaky components
- ✓ Incorrect value components
- ✓ Internally damaged components
- ✓ Inconsistent devices over frequency range
- ✓ Short and open circuits



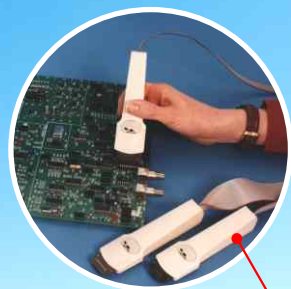
Scan or click the QR code to access the product page online



No power = safe test !

V/I signature testing is a proven technique that is safe for components under tests because the signatures are acquired when no power is applied to the device. More importantly, V/I signature testing can be used on a heavily damaged PCBs that cannot be powered up.

Accessories



NEW - EZ Prober for SOIC components

EZ Prober

16 pin with 5.5mm gauge, 28 pins with 10mm gauge - custom designs available

MultiProbe Range

0.050" pitch 10 pin (SOIC and PLCC) and 0.100" pitch 8 pin (DIL).

PenProbe 4-piece Set

Type 1 (3 pin transistors, SOT23 and similar), type 2 (3 pin transistors, TO72 and similar), type 3 (3 pin transistors, TO220 and similar), type 4 (3 pin transistors, TO92 and similar)

SOIC test clip and cable set

8,14,16 pin narrow and 20, 24, 28 pin wide

PLCC test clip and cable assembly

20, 28, 44, 52, 68 and 84 pin

QFP test clip and cable assembly

100, 144, 160, 208 pin

Smartphone ?



Diagnostic Solutions



Smartphone ?



SYSTEM 8 Modules

Combine modules and their test capabilities to suit your requirements. The BoardMaster 8000 PLUS is top of the SYSTEM 8 range.

Advanced Test Module (ATM)

- In-circuit functional testing (all logic families)
- Out-of-circuit functional testing
- Board level testing (voltage drive/sense, V/I signature)
- Graphical generator for custom test vectors
- Connections, voltage, thermal and V/I signature tests
- IC identification of unknown parts
- Short locator



Board Fault Locator (BFL)

- In-circuit functional testing (TTL/CMOS)
- Out-of-circuit functional testing
- Graphical generator for TTL/CMOS test vectors
- Connections, voltage, thermal and V/I signature tests
- IC identification of unknown parts
- Short locator

Analogue IC Tester (AICT)

- In-circuit functional testing of analogue ICs
- In-circuit functional testing of discrete components
- Connections and voltage tests
- V/I signature tests
- Matrix V/I tests
- Dynamic tests for gate-activated devices



Multiple Instrument Station (MIS)

- Virtual digital storage oscilloscope
- Virtual floating digital multimeter
- Virtual function generator
- Virtual frequency and event counter
- Programmable analogue and digital I/O
- Integrated calculator with data logging

Variable Power Supply (VPS)

- Adjustable logic supply with over voltage protection
- Adjustable positive supply with current limit
- Adjustable negative supply with current limit
- Virtual instrument



Boundary Scan Tester & Programmer



JTAGMaster

Complete and powerful solution for the testing, fault-finding and in-system programming of complex PCB assemblies with JTAG devices.

- ✓ Increase test coverage by accessing components that cannot be probed
- ✓ Program devices in-system irrespective of the manufacturer
- ✓ Integrate the JTAGMaster easily into your existing setup
- ✓ Implement this solution at all levels, from R&D to production

Test coverage

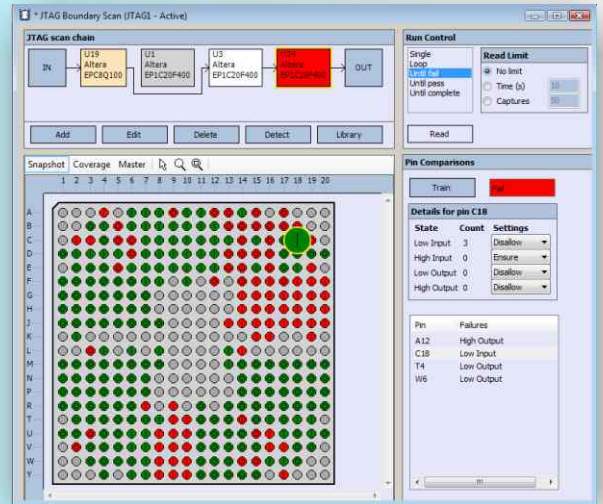
- Manufacturing defects (eg. open circuit/shorted pins)
- Logic errors (eg. pin failing to toggle/faulty device)
- Programme errors (eg. incorrect/corrupted program)
- Faults in external circuitry (eg. missing or stuck input signal)

Smartphone ?



Features

- Individual pin monitoring with graphical interface
- Non intrusive testing during normal PCB operation
- Extest mode for the manual control of pins
- Record and compare data on complete JTAG chains
- Generate documented test sequences

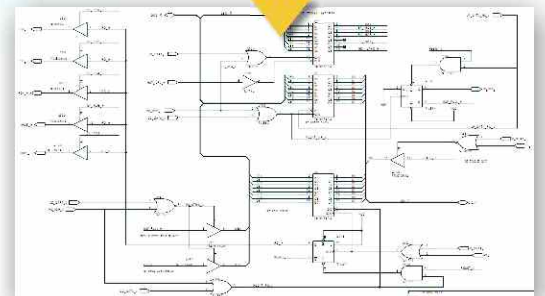


Schematic Learning System

RevEng

A simple to use system designed for the generation of professional schematics from a sample board.

- ✓ Implement a maintenance strategy independent from the OEM
- ✓ Cut down fault finding time by using schematics
- ✓ Replace less components and therefore reduce spares inventory
- ✓ Reduce the number of board write-offs



Key benefits

- Software guidance for clipping and probing
- Learning process can be stopped and restarted at any time
- Independent of the PCB's complexity
- Suitable for functionally faulty PCBs
- Professional software suite for schematics generation

Smartphone ?



Precision Active Oscilloscope



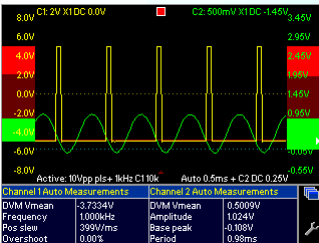
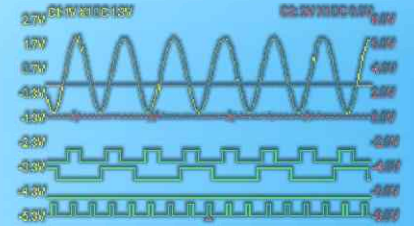
CircuitMaster 4000M

This precision active oscilloscope combines the power of a 100 MHz DSO, 0.1% accurate DC measurement and V/I signature analysis with a unique test technique (active mode) to provide a wealth of circuit diagnostics.

- ✓ Combine your test equipment into one unit
- ✓ Benefit from power on and power off tests
- ✓ Reduce operator errors with automatic setup through software
- ✓ Speed up test processes with automated test sequences

Key features

- Simultaneous DC voltage measurement and AC waveform acquisition
- Simultaneous voltage drive and sense with active mode
- DC and AC function generator
- V/I signature analysis with pulse outputs
- Automatic signal comparison

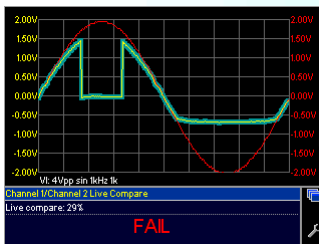
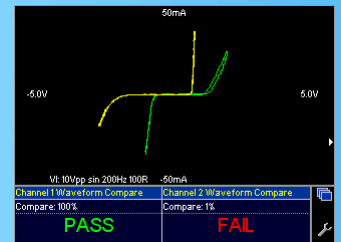


Active mode testing

- ✓ Distinguish between open circuit, short circuit and output low
- ✓ Check for component reliability under load
- ✓ Check for phase lag with AC signals

V/I signature analysis

- ✓ Test resistors, inductors, capacitors and semiconductors
- ✓ Check for internal damage of component structure
- ✓ Check for leaky and incorrect value components
- ✓ Check for short and open circuits

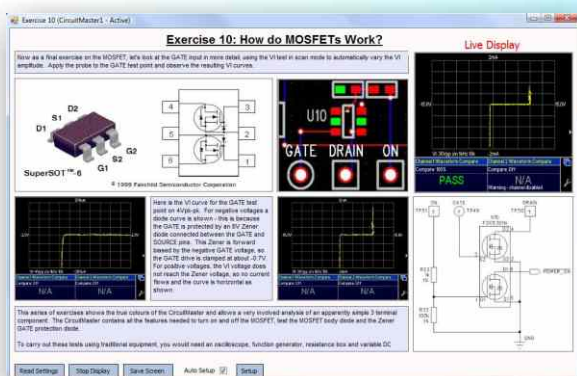


Dynamic test for gate-activated devices

- ✓ Test the activation of transistors, triacs, IGBTs, relays etc.
- ✓ Determine the voltage level for activation
- ✓ Check the memory effect of triacs

Less time probing

- Equipped with footswitch for safer and quicker probing
- Footswitch configuration: pause, save or compare
- 40 channels acquisition with MultiWay connector
- 2x20 channels comparison with split cable
- 4 logic inputs with adjustable threshold



PC user interface

- ✓ Generate automated test sequences
- ✓ Send test parameters for automatic setup
- ✓ Save reference curves for comparison
- ✓ Add documentation and guidance to sequence
- ✓ Capture screenshots

Smartphone ?



Counterfeit IC Detector



SENTRY

A unique solution for the quick detection of counterfeit and non conforming components. SENTRY is an ideal addition to an anti-counterfeiting program for component suppliers and electronics manufacturers.

- ✓ Protect your production/distribution facility against counterfeit parts
- ✓ Reduce delays and costs involved with re-orders and re-works
- ✓ Preserve your image for quality and high standards

Key features

- Suitable for digital and analogue components
- Compatible with all packages using adapters
- Minimal knowledge of electronics required
- Flexible software with report generator



Did you know ?

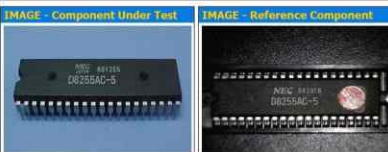
It is estimated that yearly export of counterfeit ICs accounts for more than 8% of global merchandise trade, equivalent to a financial loss of over \$10 billion.



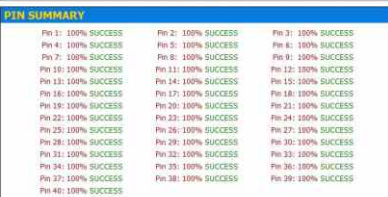
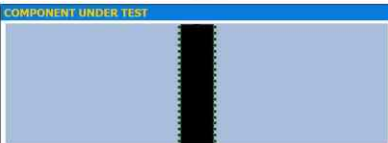
SENTRY - Component Test Report

COMPONENT DETAILS	Comparison Tolerances
Component Reference : 08255AC-5	Horizontal Tolerance : 5
Package : 40 pin DIL wide	Vertical Tolerance : 5
Adapter : 40 pin DIL (QJ40)	Pin Fall Tolerance : 50
Manufacturer : SEC	Pin Suspect Tolerance : 90
Operator : User Mail	Fail if Falls Tolerance : 5
Date : 28 February 2011	Fail if Suspects Tolerance : 15
Time : 03:37 PM	Suspect if Falls Tolerance : 3
	Suspect if Falls Tolerance : 10

OVERALL RESULT
SUCCESS



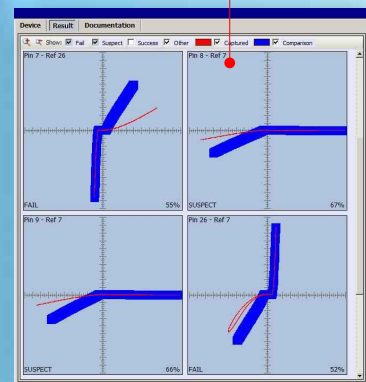
COMPONENT UNDER TEST



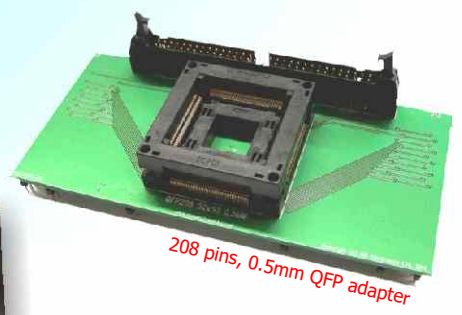
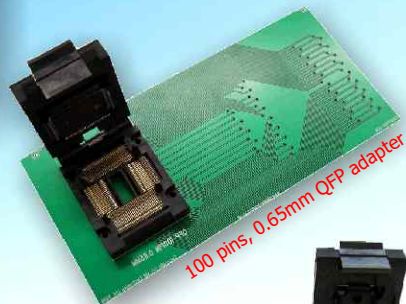
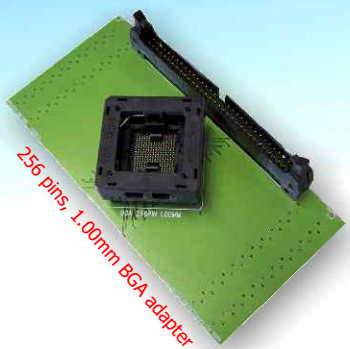
SENTRY Operation

The fundamental principle of SENTRY is to acquire the PinPrints of a reference device, to store this information and to compare these PinPrints with another device under test. The reference device can be the first component of a batch or a device imported to the library.

PinPrints = the electrical characteristics of each pin of a device when submitted to a power-off dynamic stimulus. The response from each of the pins is directly related to the nature of the device, its internal structure and the manufacturing processes it was subject to.



- Automatic and configurable test parameters
- Library management with import/export functions
- Design mode for packages and adapters
- Addition of reference documents supported
- Calibration kit available



Out-of-circuit functional testers

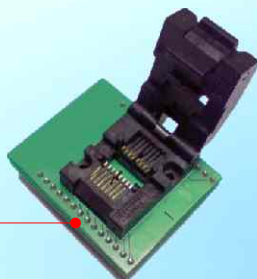
ChipMaster and LinearMaster Professional

Popular handheld solutions for the functional test of digital and analogue devices out-of-circuit.

Features

- Functional tests from internal library
- Diagnostic information for individual pins
- Conditional loop tests for intermittent faults
- IC identification for unknown components
- Functional test program generator

Suitable for SOIC packages with adapter



Smartphone ?

With ABI, you're in good company!

Telefonica

BBC



ThyssenKrupp



AIRBUS



RENAULT



THALES

NASA



ALCATEL

BAE SYSTEMS

at&t



SIEMENS

METRÔ

ALAMYS

Contact your local distributor:

ABI Electronics Ltd

Dodworth Business Park
Barnsley S75 3SP
South Yorkshire
United Kingdom

Tel: +44 (0) 1226 207420

Fax: +44 (0) 1226 207620

www.abielectronics.co.uk

sales@abielectronics.co.uk

The ABI Electronics team strive to continuously improve its products and services for the benefit of its customers. The availability, description and specifications of current products may therefore vary from those described in this brochure. Visit the ABI Electronics website for up to date information.